



CHELSEA HARBOR/DOWNTOWN NORWICH MOBILITY STUDY

Transportation Advisory Committee Meeting #4

Study Overview and Downtown Visioning/Potential
Improvements

June 10, 2024



TAC Meeting Agenda

- Welcome & Introductions
- Recap of June 5 Public Meeting
- Review of Potential Transportation Improvements
 - Overall Transportation Improvements
 - Improvements East of Franklin Square
 - West Main Street & Westside Blvd Bridges
 - Discussion
- Next Steps



June 5 Public Meeting Recap

- Overall positive
- Support for Options mixed (no clear winner)
- Mayor concerned about bridge maintenance, noted passenger rail station possible location
- Emergency vehicle access
- Aesthetics of Bridge of Roses
- Bike/Pedestrian connectivity to bridges



An aerial photograph of a city area featuring a river, several highways, and various buildings. The text "Transportation Improvements" is overlaid in the center.

Transportation Improvements

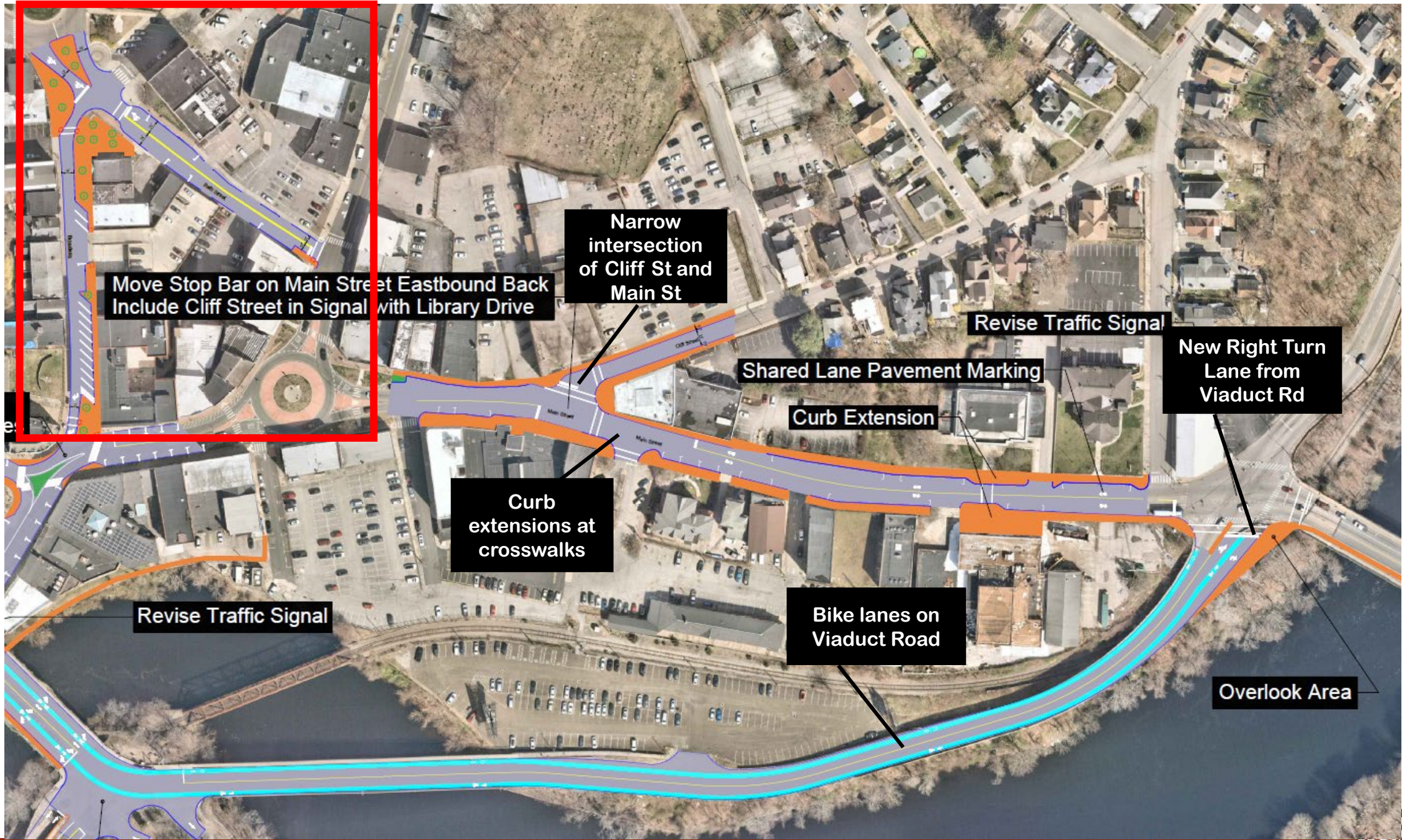


Transportation Improvements Vision

- High level notes:
 - Preliminary traffic modeling shows these concepts are feasible
 - Concepts were reviewed by City Council and TAC
- Through traffic patterns may change if concepts are implemented
- Questions or comments about the concepts are welcome







Move Stop Bar on Main Street Eastbound Back
Include Cliff Street in Signal with Library Drive

Narrow
intersection
of Cliff St and
Main St

Revise Traffic Signal

Shared Lane Pavement Marking

Curb Extension

New Right Turn
Lane from
Viaduct Rd

Curb
extensions at
crosswalks

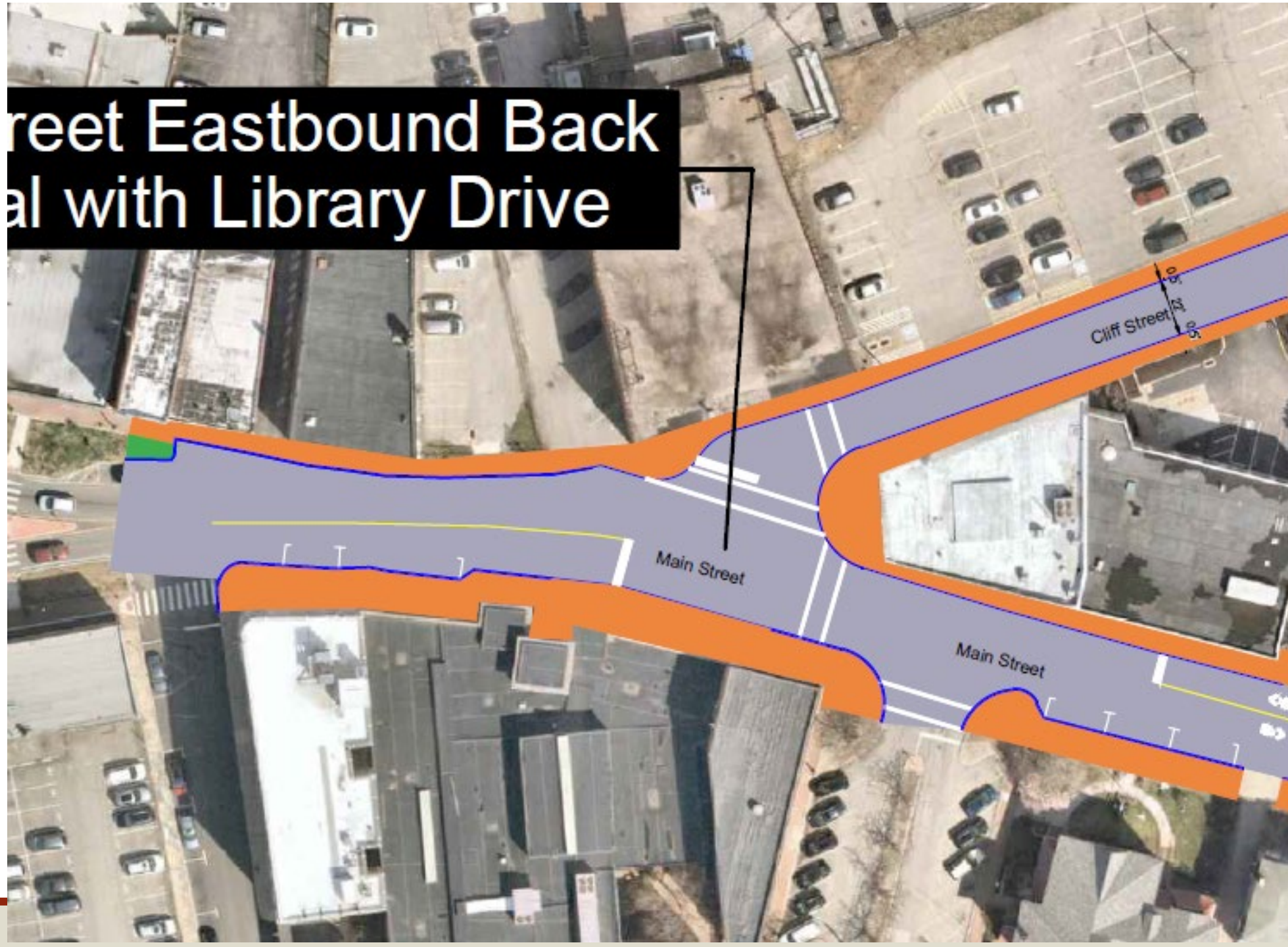
Revise Traffic Signal

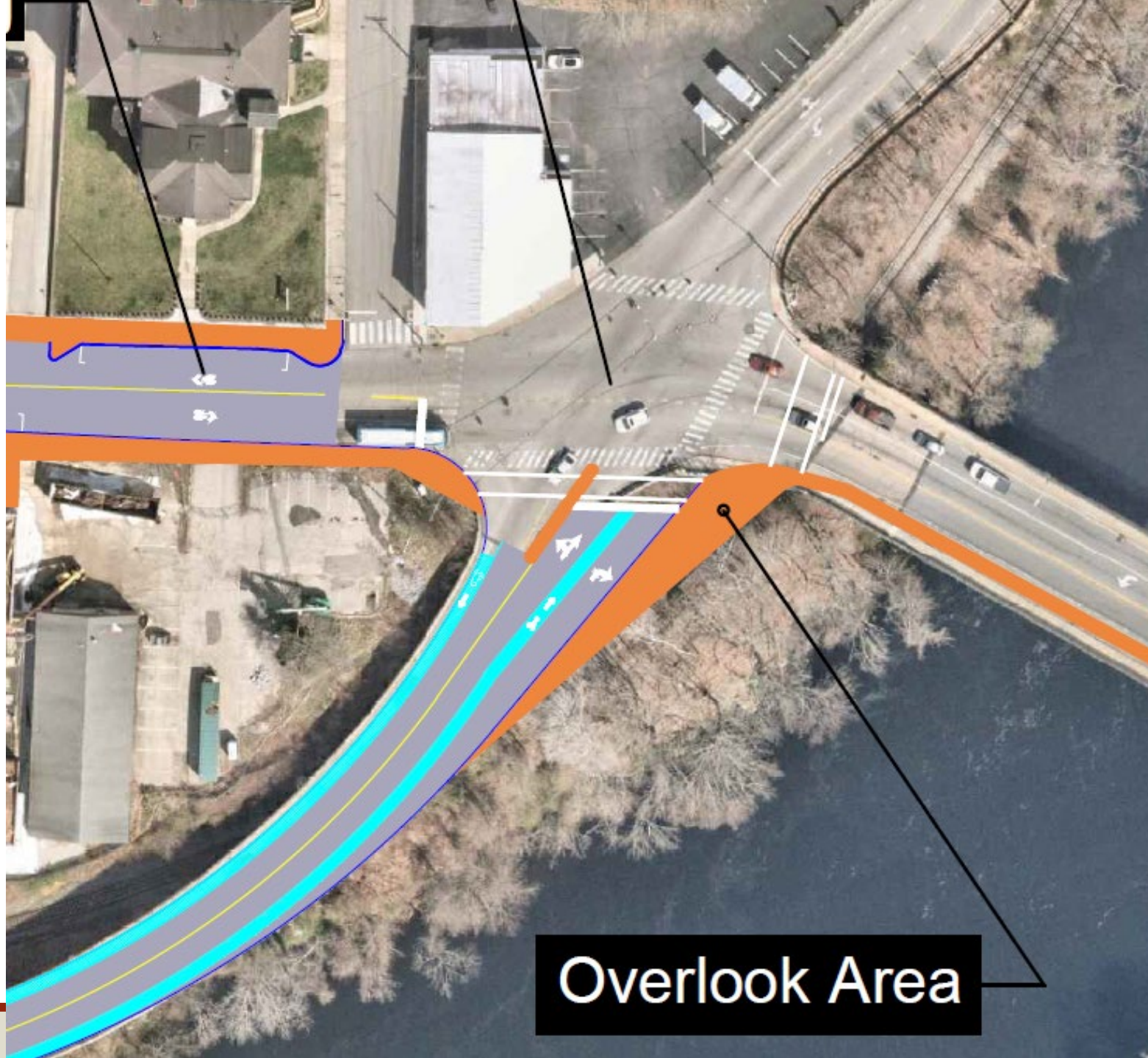
Bike lanes on
Viaduct Road

Overlook Area



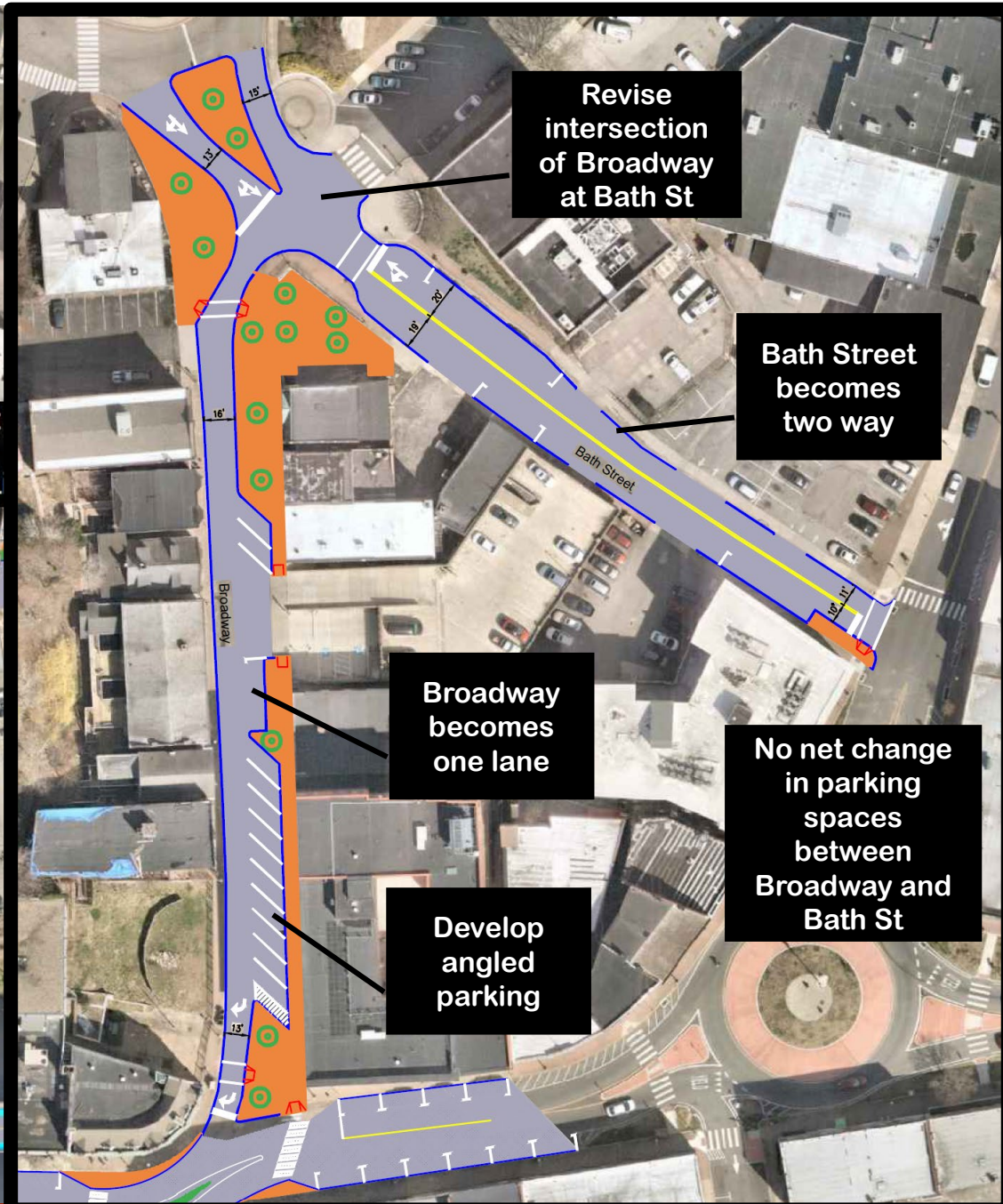
Street Eastbound Back al with Library Drive

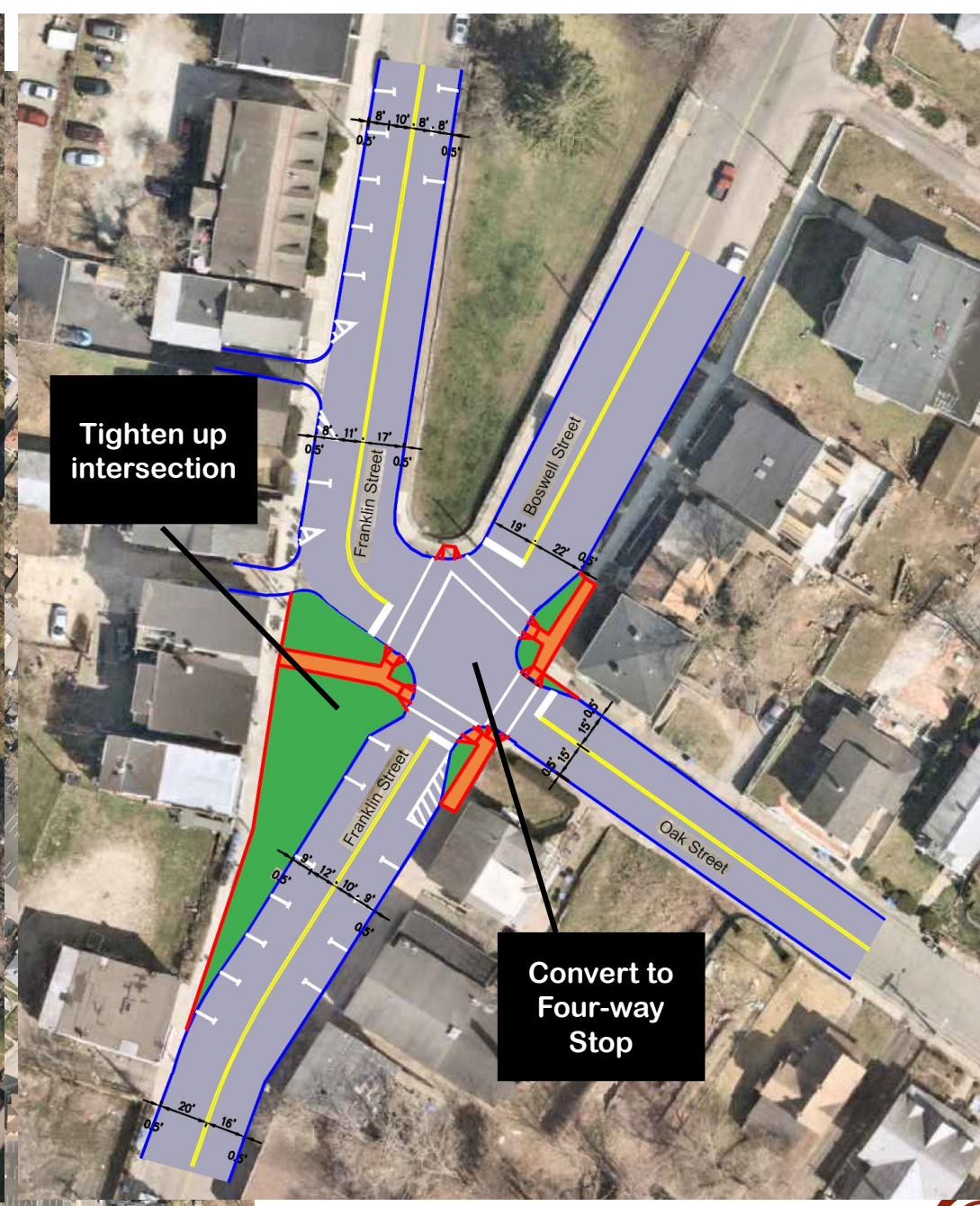




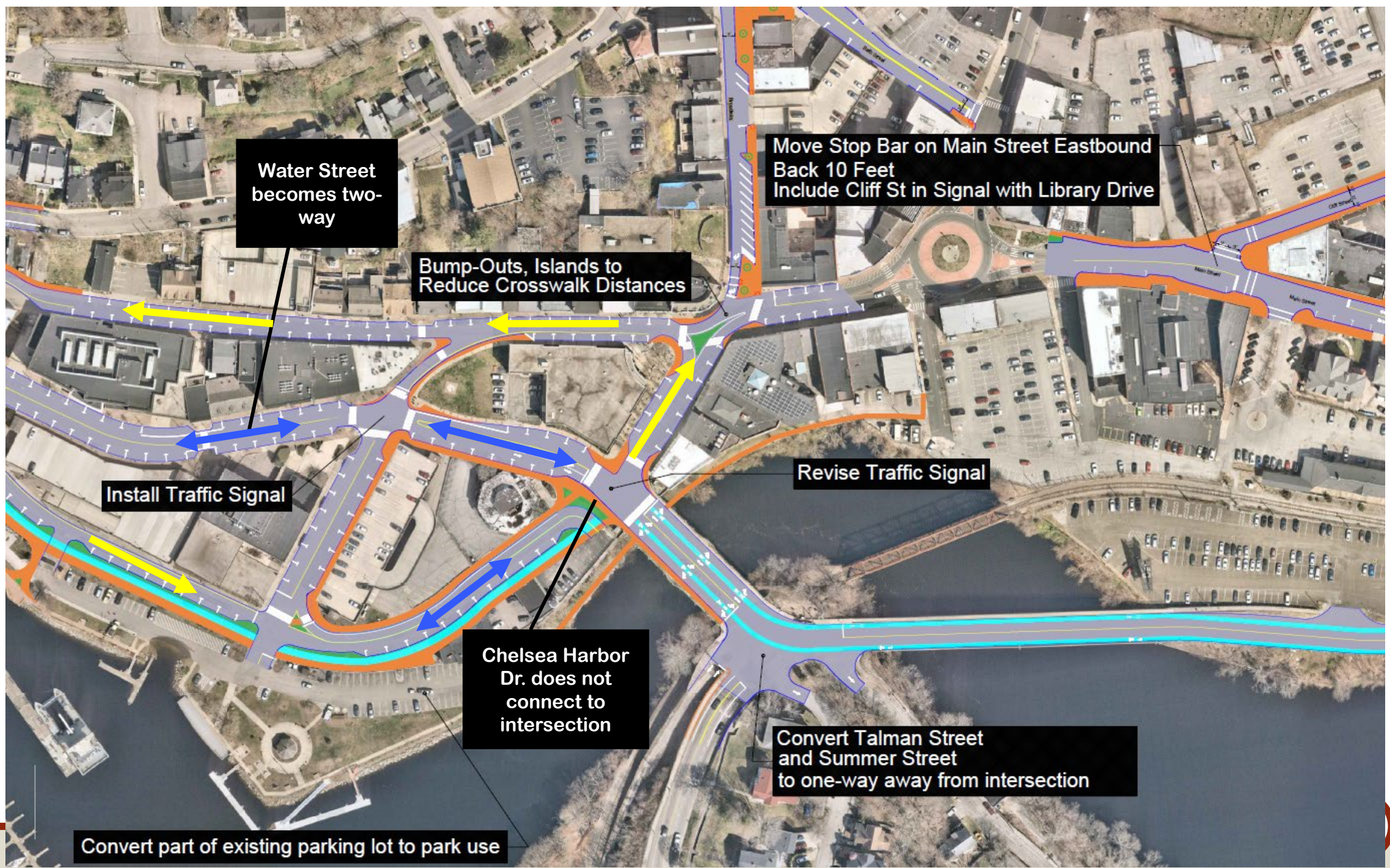
Overlook Area











Water Street
becomes two-
way

Move Stop Bar on Main Street Eastbound
Back 10 Feet
Include Cliff St in Signal with Library Drive

Bump-Outs, Islands to
Reduce Crosswalk Distances

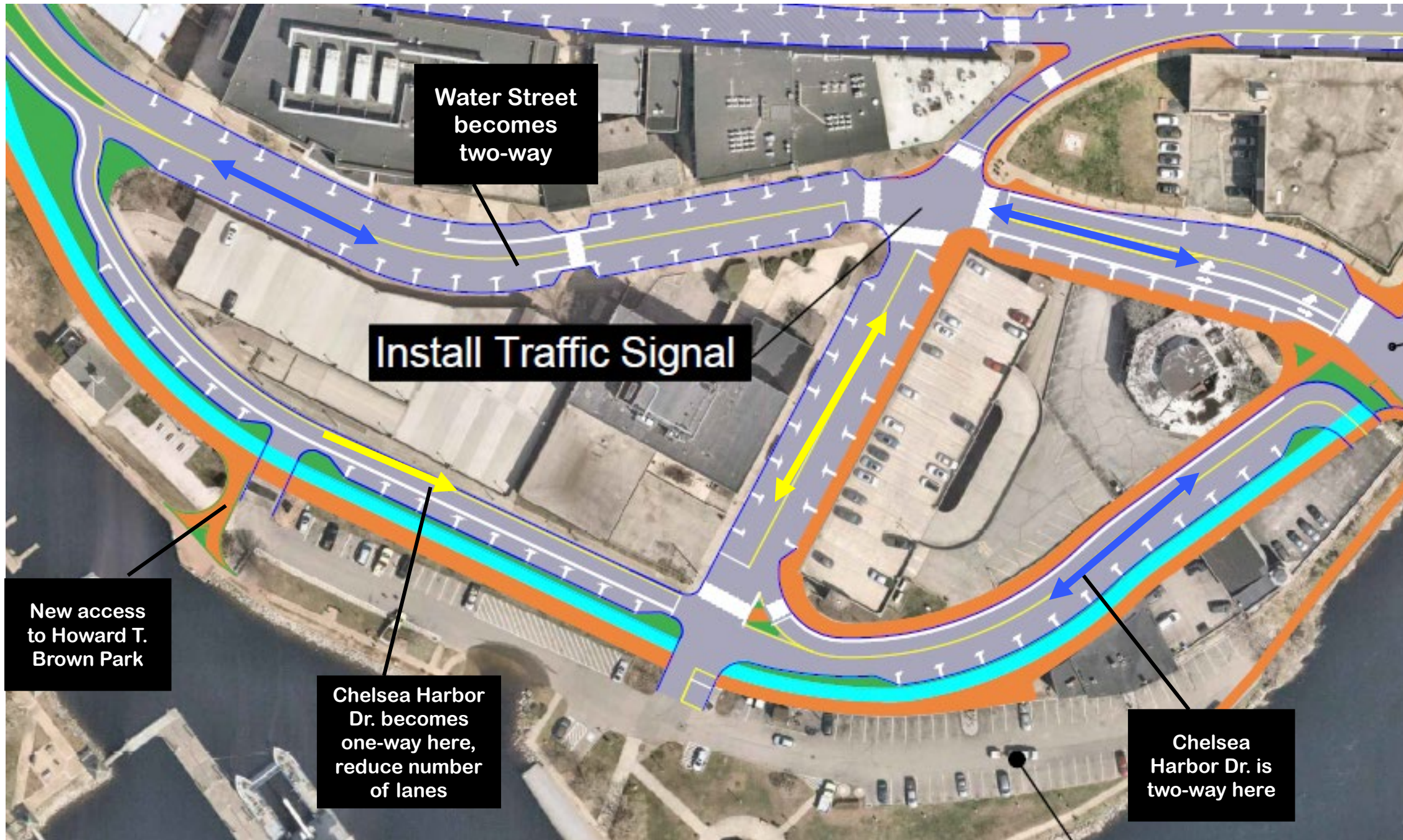
Install Traffic Signal

Revise Traffic Signal

Chelsea Harbor
Dr. does not
connect to
intersection

Convert Talman Street
and Summer Street
to one-way away from intersection

Convert part of existing parking lot to park use



Water Street
becomes
two-way

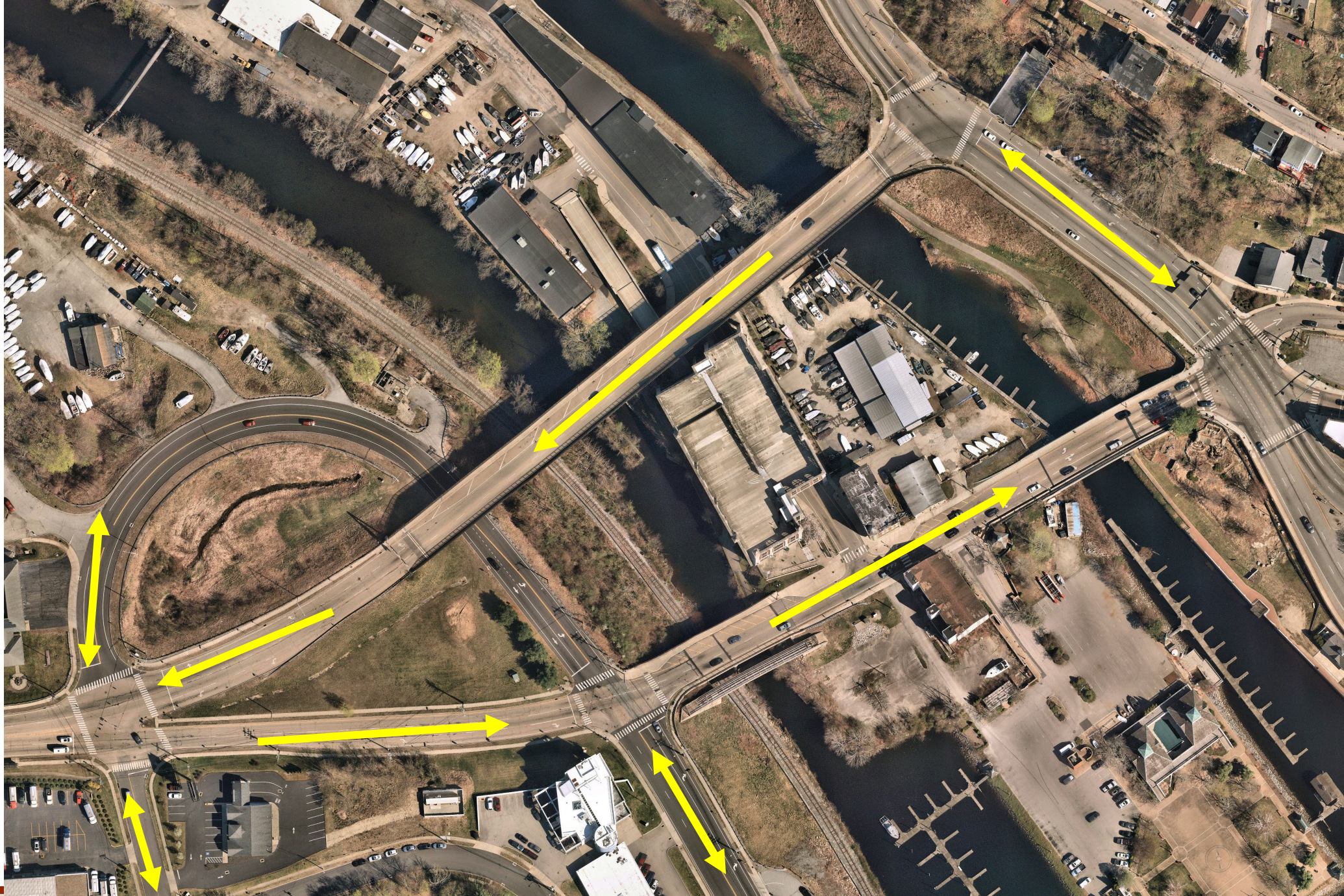
Install Traffic Signal

New access
to Howard T.
Brown Park

Chelsea Harbor
Dr. becomes
one-way here,
reduce number
of lanes

Chelsea
Harbor Dr. is
two-way here





OPTION 1

Way-Finding Map

Gateway Sign

Roundabout at Washington Square

Sidewalk/Event Space

Bike Lane

Planting Areas

Roundabout at W. Main St. & N. Thames St.

Public Art Wall

Potential Pedestrian Bridge Connection to Garage

Install Traffic Signal

Potential Park Area



Pedestrian-Bike "Bridge of Roses"



OPTION 2

Roundabout at Washington St. and Westside Blvd

Roundabout at Washington Square

Roundabout at W. Main St. & N. Thames St.

Sidewalks

Bike Lane
Grass/Landscaped Area

Pedestrian Plaza

Planters

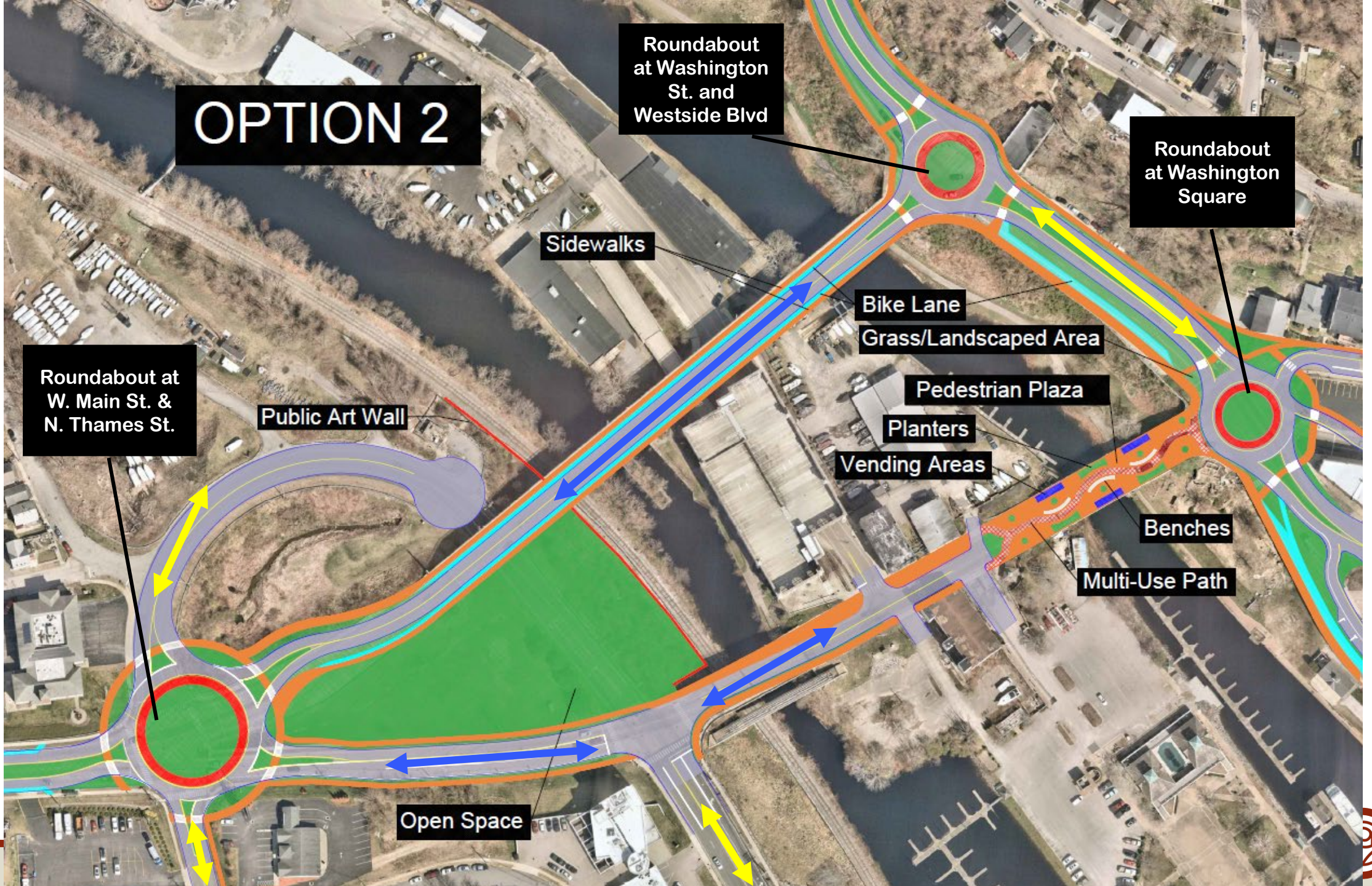
Vending Areas

Benches

Multi-Use Path

Public Art Wall

Open Space



OPTION 3

Roundabout at Washington St. and Westside Blvd

Roundabout at Washington Square

Sidewalks

Bike Lane

Grass/Landscaped Area

Roundabout at W. Main St. & N. Thames St.

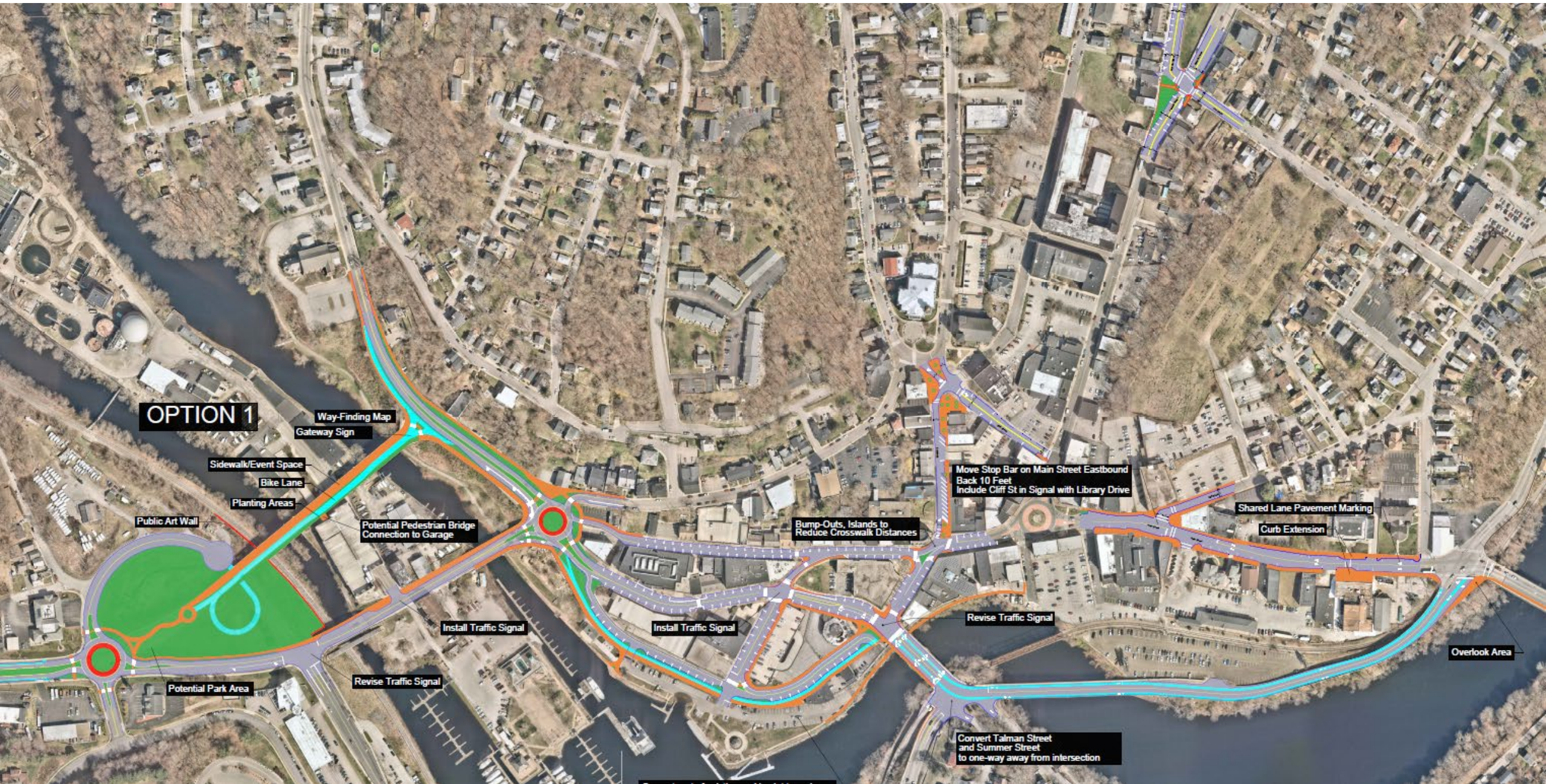
Public Art Wall

Install Traffic Signal

Open Space



Comments/Discussion



Next Steps

- June 10 – TAC Meeting #4
- July 15 – Norwich City Council Meeting
- June-August – Draft and Final Study Report





Questions/Discussion?



damstutz@vhb.com



860.807.4417



<https://downtownnorwichmobilitystudy.com/>



Thank You!



SCCOG



Public Information Meeting #2

Study Overview and Downtown Visioning/Potential Improvements